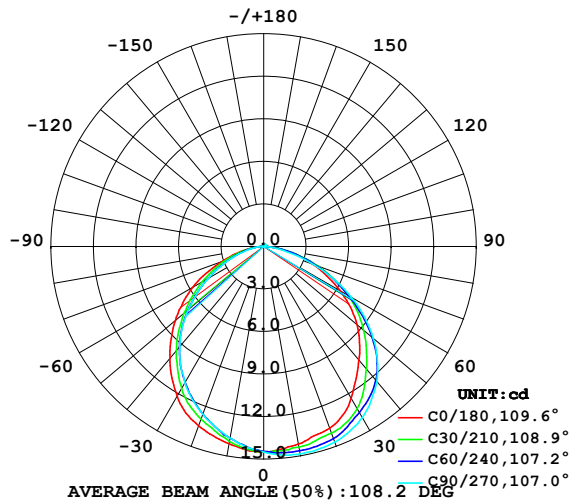


LUMINAIRE PHOTOMETRIC TEST REPORT

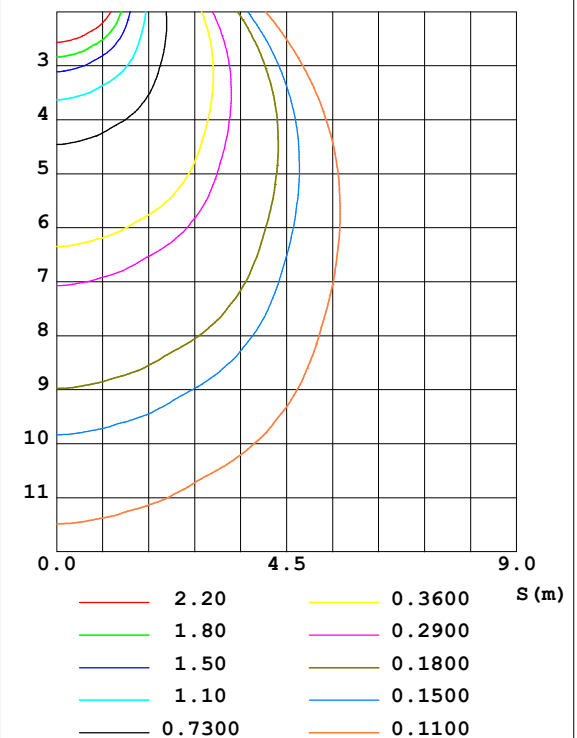
Test:U:24.00V I:0.1700A P:4.080W PF:1.000 Lamp Flux:40.2039x1 lm		
NAME: SP01-24V-5050-60-RGBW-4000K-80-B	TYPE: 硅胶	WEIGHT:
DIM.: 15mm*7mm	SPEC.:	SERIAL No.:20221221
MFR.: OLYMPIA	SUR.:1*0.0015	PROTECTION ANGLE:

DATA OF LAMP		PHOTOMETRIC DATA				Eff: 9.85 lm/W
MODEL	5050	I _{max} (cd)	14.85	S/MH (C0/180)	1.26	
NOMINAL POWER (W)	17	LOR (%)	100.0	S/MH (C90/270)	1.41	
RATED VOLTAGE (V)	24	TOTAL FLUX (lm)	40.204	η UP, DN (C0-180)	0.7, 54.4	
NOMINAL FLUX (lm)	40.2039	CIE CLASS	DIRECT	η UP, DN (C180-360)	0.5, 44.4	
LAMPS INSIDE	1	η up (%)	1.2	CIBSE SHR NOM	1.25	
TEST VOLTAGE (V)	24.0	η down (%)	98.8	CIBSE SHR MAX	1.35	

LUMINOUS INTENSITY DISTRIBUTION DIAGRAM



C0 PLANE ISOLUX DIAGRAM (UNIT:lx)



C Range: 0 - 360DEG
C Interval: 30.0DEG
Test Speed: HIGH
Temperature: 25.3DEG
Operators: WFW
Test Date: 2022-12-14

γ Range: 0 - 180DEG
γ Interval: 1.0DEG
Test System: EVERFINE GO-2000B_V1 SYSTEM V2.0.269
Humidity: 65.0%
Test Distance: 10.800m [K=1.0000]
Remarks:

ZONAL FLUX DIAGRAM AND LUMINANCE LIMITATION CURVES

ZONAL FLUX DIAGRAM:

γ	C0	C45	C90	C135	C180	C225	C270	C315	γ	Φ zone	Φ total	%lum, lamp
10	14.15	14.50	14.85	14.59	14.13	13.84	13.73	13.71	0- 10	1.366	1.366	3.4,3.4
20	13.64	14.21	14.68	14.24	13.46	12.75	12.59	12.72	10- 20	3.920	5.286	13.1,13.1
30	12.35	13.36	13.93	13.41	12.20	11.33	11.10	11.40	20- 30	6.008	11.29	28.1,28.1
40	10.45	11.78	12.43	11.79	10.32	9.412	9.220	9.544	30- 40	7.225	18.52	46.1,46.1
50	8.604	9.614	10.09	9.465	8.156	7.158	6.970	7.438	40- 50	7.385	25.90	64.4,64.4
60	6.201	6.878	7.131	6.715	5.787	4.809	4.524	5.124	50- 60	6.413	32.32	80.4,80.4
70	3.708	4.024	3.772	3.868	3.183	2.666	2.356	2.888	60- 70	4.542	36.86	91.7,91.7
80	1.450	1.493	1.086	1.420	1.155	0.9695	0.7975	1.074	70- 80	2.328	39.19	97.5,97.5
90	0.1044	0.0625	0.0762	0.0660	0	0.0174	0.0280	0.0348	80- 90	0.5391	39.72	98.8,98.8
100	0.0554	0.0589	0.0900	0.0623	0.0139	0	0.0139	0.0208	90-100	0.0420	39.77	98.9,98.9
110	0.0693	0.0796	0.0970	0.0762	0.0347	0	0.0139	0.0312	100-110	0.0454	39.81	99,99
120	0.0693	0.0900	0.1246	0.0866	0.0693	0.0416	0.0416	0.0416	110-120	0.0585	39.87	99.2,99.2
130	0.0693	0.1005	0.1247	0.1004	0.0902	0.0797	0.0623	0.0658	120-130	0.0690	39.94	99.3,99.3
140	0.0762	0.1039	0.1316	0.1108	0.1177	0.1004	0.0693	0.0970	130-140	0.0746	40.01	99.5,99.5
150	0.1038	0.1247	0.1594	0.1247	0.1454	0.1246	0.0831	0.1108	140-150	0.0688	40.08	99.7,99.7
160	0.1316	0.1419	0.1663	0.1351	0.1731	0.1420	0.1176	0.1316	150-160	0.0600	40.14	99.8,99.8
170	0.1730	0.1731	0.1939	0.1696	0.1939	0.1697	0.1524	0.1593	160-170	0.0438	40.19	100,100
180	0.1939	0.1870	0.1939	0.1870	0.2008	0.1939	0.1939	0.1870	170-180	0.0170	40.20	100,100
DEG	LUMINOUS INTENSITY:cd									UNIT:lm		



LUMINANCE cd/(m2)		
G (DEG)	C0/180	C90/270
85	66	42
80	83	63
75	98	86
70	108	110
65	116	129
60	124	143
55	130	151
50	134	157
45	135	161

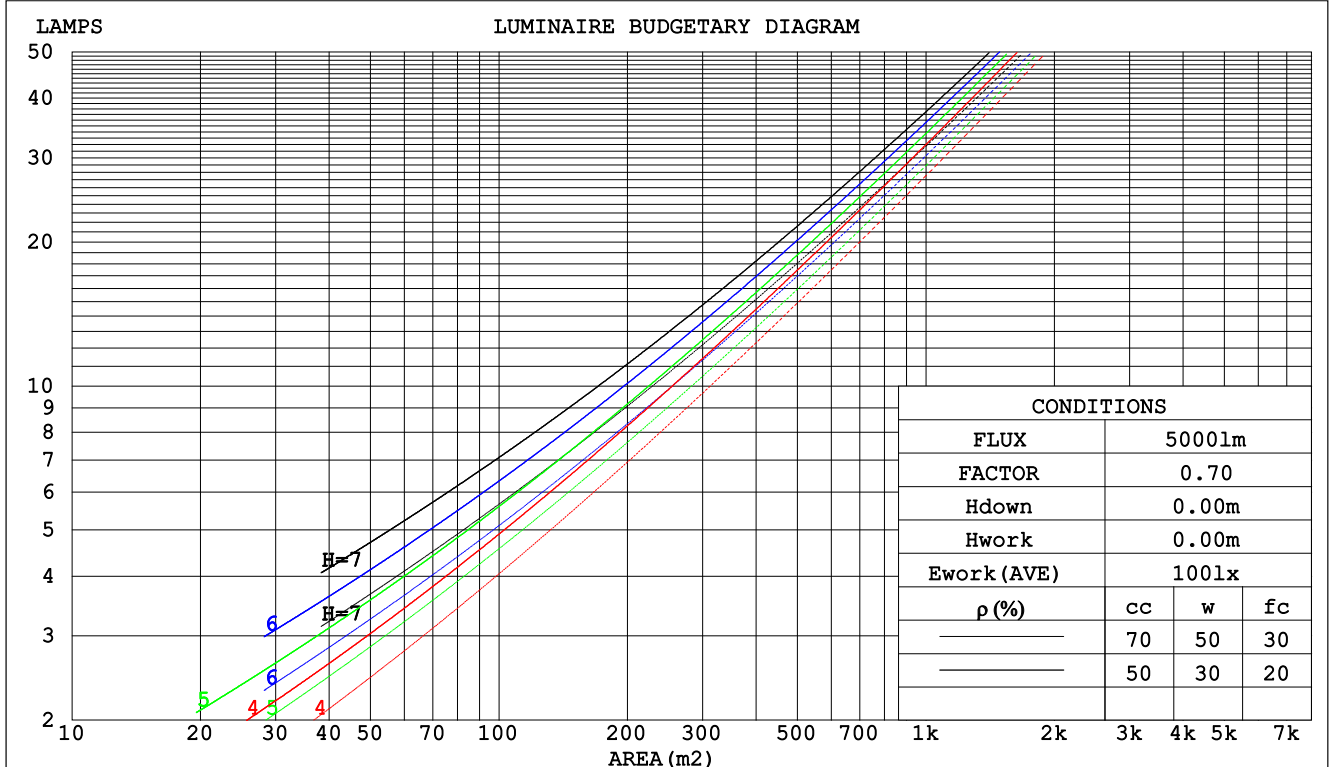
C Range: 0 - 360DEG
C Interval: 30.0DEG
Test Speed: HIGH
Temperature:25.3DEG
Operators:WFW
Test Date:2022-12-14

γ Range: 0 - 180DEG
 γ Interval: 1.0DEG
Test System:EVERFINE GO-2000B_V1 SYSTEM V2.0.269
Humidity:65.0%
Test Distance:10.800m [K=1.0000]
Remarks:

CU AND LUMINAIRE BUDGETARY ESTIMATE DIAGRAM

Test:U:24.00V I:0.1700A P:4.080W PF:1.000 Lamp Flux:40.2039x1 lm		
NAME: SP01-24V-5050-60-RGBW-4000K-80-B	TYPE: 硅胶	WEIGHT:
DIM.: 15mm*7mm	SPEC.:	SERIAL No.:20221221
MFR.: OLYMPIA	SUR.:1*0.0015	PROTECTION ANGLE:

ρ_{cc}	80%			70%			50%			30%			10%			0
ρ_w	50%	30%	10%	50%	30%	10%	50%	30%	10%	50%	30%	10%	50%	30%	10%	0
ρ_{fc}	20%			20%			20%			20%			20%			0
RCR	Coefficients of Utilization(CU)															
RCR:Room Cavity Ratio																
0.0	1.19	1.19	1.19	1.16	1.16	1.16	1.10	1.10	1.10	1.05	1.05	1.05	1.01	1.01	1.01	.99
1.0	1.04	1.00	.97	1.02	.98	.95	.97	.94	.92	.93	.91	.89	.90	.88	.86	.84
2.0	.91	.85	.79	.89	.83	.78	.86	.80	.76	.82	.78	.74	.79	.75	.72	.70
3.0	.80	.72	.66	.79	.71	.65	.76	.69	.64	.73	.67	.63	.70	.65	.62	.59
4.0	.71	.63	.56	.70	.62	.56	.67	.60	.55	.65	.59	.54	.62	.57	.53	.51
5.0	.64	.55	.48	.63	.54	.48	.60	.53	.47	.58	.52	.47	.56	.51	.46	.44
6.0	.57	.49	.42	.56	.48	.42	.54	.47	.42	.53	.46	.41	.51	.45	.41	.39
7.0	.52	.43	.37	.51	.43	.37	.50	.42	.37	.48	.41	.36	.47	.41	.36	.34
8.0	.47	.39	.33	.47	.39	.33	.45	.38	.33	.44	.37	.33	.43	.37	.32	.30
9.0	.44	.35	.30	.43	.35	.30	.42	.35	.30	.41	.34	.29	.39	.34	.29	.27
10.0	.40	.32	.27	.40	.32	.27	.39	.32	.27	.38	.31	.27	.37	.31	.27	.25



C Range: 0 - 360DEG
C Interval: 30.0DEG
Test Speed: HIGH
Temperature:25.3DEG
Operators:WFW
Test Date:2022-12-14

γ Range: 0 - 180DEG
 γ Interval: 1.0DEG
Test System:EVERFINE GO-2000B_V1 SYSTEM V2.0.269
Humidity:65.0%
Test Distance:10.800m [K=1.0000]
Remarks:

WEC AND CCEC

Test:U:24.00V I:0.1700A P:4.080W PF:1.000 Lamp Flux:40.2039x1 lm		
NAME: SP01-24V-5050-60-RGBW-4000K-80-B	TYPE: 硅胶	WEIGHT:
DIM.: 15mm*7mm	SPEC.:	SERIAL No.:20221221
MFR.: OLYMPIA	SUR.:1*0.0015	PROTECTION ANGLE:

pcc	80%			70%			50%			30%			10%			0
pw	50%	30%	10%	50%	30%	10%	50%	30%	10%	50%	30%	10%	50%	30%	10%	0
pfc	20%			20%			20%			20%			20%			0
RCR	RCR:Room Cavity Ratio						Wall Exitance Coefficients(WEC)									
0.0																
1.0	.296	.168	.053	.288	.164	.052	.274	.157	.050	.262	.151	.048	.250	.145	.047	
2.0	.281	.154	.047	.275	.151	.047	.262	.146	.045	.251	.141	.044	.241	.136	.043	
3.0	.262	.139	.042	.256	.137	.041	.245	.133	.040	.235	.129	.040	.226	.125	.039	
4.0	.243	.126	.037	.238	.124	.037	.228	.121	.036	.219	.118	.036	.211	.115	.035	
5.0	.225	.115	.033	.221	.113	.033	.212	.111	.033	.204	.108	.032	.197	.105	.032	
6.0	.210	.105	.030	.206	.104	.030	.198	.101	.030	.191	.099	.029	.184	.097	.029	
7.0	.196	.097	.027	.192	.096	.027	.185	.094	.027	.179	.092	.027	.173	.090	.026	
8.0	.183	.089	.025	.180	.089	.025	.174	.087	.025	.168	.085	.025	.162	.083	.024	
9.0	.172	.083	.023	.169	.082	.023	.163	.081	.023	.158	.079	.023	.153	.078	.022	
10.0	.162	.078	.022	.159	.077	.021	.154	.075	.021	.149	.074	.021	.145	.073	.021	

pcc	80%			70%			50%			30%			10%			0
pw	50%	30%	10%	50%	30%	10%	50%	30%	10%	50%	30%	10%	50%	30%	10%	0
pfc	20%			20%			20%			20%			20%			0
RCR	RCR:Room Cavity Ratio						Ceiling Cavity Exitance Coefficients (CCEC)									
0.0	.200	.200	.200	.171	.171	.171	.116	.116	.116	.067	.067	.067	.021	.021	.021	
1.0	.188	.165	.145	.161	.142	.124	.110	.098	.086	.063	.057	.050	.020	.018	.016	
2.0	.180	.141	.109	.154	.122	.094	.106	.084	.065	.061	.049	.038	.020	.016	.012	
3.0	.172	.124	.085	.148	.107	.073	.101	.074	.052	.059	.043	.030	.019	.014	.010	
4.0	.165	.110	.069	.141	.095	.060	.097	.066	.042	.056	.039	.025	.018	.013	.008	
5.0	.157	.100	.057	.135	.086	.050	.093	.060	.035	.054	.035	.021	.017	.012	.007	
6.0	.150	.091	.049	.129	.079	.043	.089	.055	.030	.052	.033	.018	.017	.011	.006	
7.0	.144	.084	.043	.124	.073	.037	.085	.051	.027	.050	.030	.016	.016	.010	.005	
8.0	.137	.079	.038	.118	.068	.034	.082	.048	.024	.048	.028	.014	.015	.009	.005	
9.0	.131	.074	.035	.113	.064	.030	.078	.045	.022	.046	.027	.013	.015	.009	.004	
10.0	.126	.069	.032	.108	.060	.028	.075	.042	.020	.044	.025	.012	.014	.008	.004	

C Range: 0 - 360DEG
C Interval: 30.0DEG
Test Speed: HIGH
Temperature:25.3DEG
Operators:WFW
Test Date:2022-12-14

γ Range: 0 - 180DEG
γ Interval: 1.0DEG
Test System:EVERFINE GO-2000B_V1 SYSTEM V2.0.269
Humidity:65.0%
Test Distance:10.800m [K=1.0000]
Remarks:

Uncorrected UGR Table

Test:U:24.00V I:0.1700A P:4.080W PF:1.000 Lamp Flux:40.2039x1 lm										
NAME: SP01-24V-5050-60-RGBW-4000K-80-B					TYPE: 硅胶			WEIGHT:		
DIM.: 15mm*7mm					SPEC.:			SERIAL No.:20221221		
MFR.: OLYMPIA					SUR.:1*0.0015			PROTECTION ANGLE:		
ceiling/cavity	0.7	0.7	0.5	0.5	0.3	0.7	0.7	0.5	0.5	0.3
walls	0.5	0.3	0.5	0.3	0.3	0.5	0.3	0.5	0.3	0.3
working plane	0.2	0.2	0.2	0.2	0.2	0.2	0.2	0.2	0.2	0.2
Room dimensions	Viewed crosswise					Viewed endwise				
x = 2H y = 2H	6.2	7.7	6.5	7.9	8.1	6.7	8.2	7.0	8.4	8.6
3H	7.5	8.9	7.8	9.1	9.4	7.9	9.3	8.2	9.5	9.8
4H	8.0	9.3	8.4	9.6	9.9	8.3	9.6	8.6	9.9	10.1
6H	8.4	9.6	8.7	9.9	10.2	8.5	9.7	8.8	10.0	10.3
8H	8.4	9.6	8.8	9.9	10.2	8.5	9.7	8.8	10.0	10.3
12H	8.5	9.6	8.9	9.9	10.3	8.5	9.6	8.8	9.9	10.2
4H 2H	6.8	8.1	7.2	8.4	8.7	7.2	8.5	7.5	8.8	9.1
3H	8.4	9.5	8.7	9.8	10.1	8.6	9.8	9.0	10.1	10.4
4H	9.0	10.0	9.4	10.4	10.7	9.1	10.1	9.5	10.5	10.8
6H	9.4	10.3	9.8	10.7	11.1	9.4	10.3	9.8	10.7	11.1
8H	9.6	10.4	10.0	10.8	11.2	9.5	10.3	9.9	10.7	11.1
12H	9.6	10.4	10.1	10.8	11.2	9.5	10.2	9.9	10.7	11.1
8H 4H	9.2	10.1	9.6	10.5	10.9	9.3	10.2	9.8	10.6	11.0
6H	9.8	10.5	10.2	10.9	11.4	9.7	10.4	10.2	10.9	11.3
8H	10.0	10.6	10.5	11.0	11.5	9.9	10.5	10.3	10.9	11.4
12H	10.1	10.6	10.6	11.1	11.6	9.9	10.5	10.4	10.9	11.4
12H 4H	9.2	10.0	9.7	10.4	10.8	9.3	10.1	9.8	10.5	10.9
6H	9.8	10.4	10.3	10.9	11.4	9.8	10.4	10.3	10.8	11.3
8H	10.0	10.6	10.5	11.0	11.5	9.9	10.5	10.4	10.9	11.4
Variations with the observer position at spacings:										
S = 1.0H	+ 0.2 / - 0.2					+ 0.2 / - 0.2				
1.5H	+ 0.3 / - 0.5					+ 0.2 / - 0.4				
2.0H	+ 0.2 / - 0.5					+ 0.3 / - 0.3				

CIE Pub.117 Corrected 40.20 lm Total Lamp Luminous Flux.(8log(F/F0) = -11.2)

C Range: 0 - 360DEG
C Interval: 30.0DEG
Test Speed: HIGH
Temperature:25.3DEG
Operators:WFW
Test Date:2022-12-14

γ Range: 0 - 180DEG
γ Interval: 1.0DEG
Test System:EVERFINE GO-2000B_V1 SYSTEM V2.0.269
Humidity:65.0%
Test Distance:10.800m [K=1.0000]
Remarks:

UTILIZATION FACTORS TABLE

Test:U:24.00V I:0.1700A P:4.080W PF:1.000 Lamp Flux:40.2039x1 lm		
NAME: SP01-24V-5050-60-RGBW-4000K-80-B	TYPE: 硅胶	WEIGHT:
DIM.: 15mm*7mm	SPEC.:	SERIAL No.:20221221
MFR.: OLYMPIA	SUR.:1*0.0015	PROTECTION ANGLE:

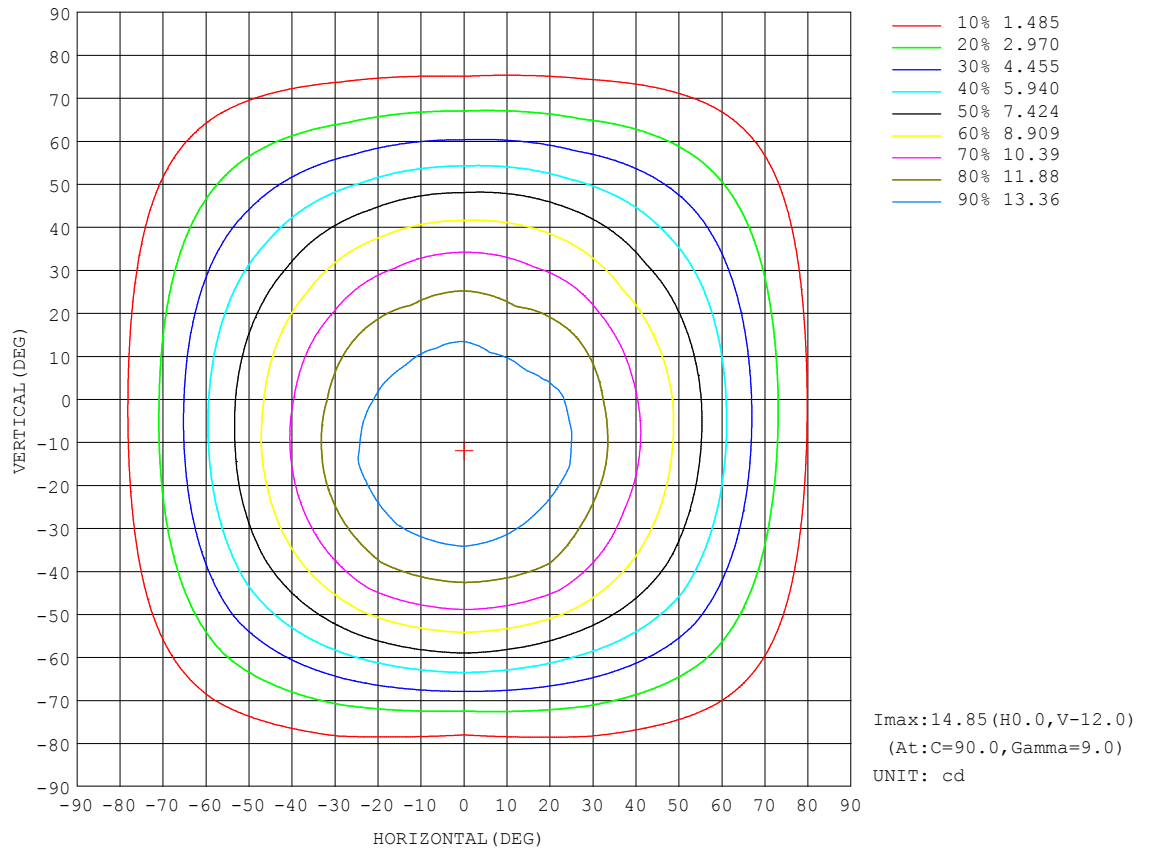
REFLECTANCE										
Ceiling	0.8	0.8	0.8	0.7	0.7	0.7	0.5	0.5	0.5	0
Walls	0.7	0.5	0.3	0.7	0.5	0.3	0.7	0.5	0.3	0
Working plane	0.2	0.2	0.2	0.2	0.2	0.2	0.2	0.2	0.2	0
ROOM INDEX	UTILIZATION FACTORS (PERCENT) $k(RI) \times RCR = 5$									
$k = 0.60$	58	47	40	57	46	40	56	46	40	33
0.80	68	57	50	67	56	50	65	56	49	42
1.00	77	66	59	76	65	59	73	67	58	51
1.25	84	74	67	82	73	66	80	71	65	58
1.50	89	79	72	87	78	72	84	76	71	63
2.00	96	87	81	94	86	80	90	84	79	71
2.50	99	92	86	97	90	85	93	88	83	75
3.00	103	96	91	100	94	90	96	91	87	79
4.00	107	101	97	104	99	95	100	96	92	83
5.00	109	104	100	106	102	99	102	98	95	86
ROOM INDEX	UF(total)									Direct
According to DIN EN 13032-2 2004			Suspended					SHRNM = 1.25		

C Range: 0 - 360DEG
 C Interval: 30.0DEG
 Test Speed: HIGH
 Temperature:25.3DEG
 Operators:WFW
 Test Date:2022-12-14

γ Range: 0 - 180DEG
 γ Interval: 1.0DEG
 Test System:EVERFINE GO-2000B_V1 SYSTEM V2.0.269
 Humidity:65.0%
 Test Distance:10.800m [K=1.0000]
 Remarks:

ISOCANDELA DIAGRAM

Test:U:24.00V I:0.1700A P:4.080W PF:1.000 Lamp Flux:40.2039x1 lm		
NAME: SP01-24V-5050-60-RGBW-4000K-80-B	TYPE: 硅胶	WEIGHT:
DIM.: 15mm*7mm	SPEC.:	SERIAL No.:20221221
MFR.: OLYMPIA	SUR.:1*0.0015	PROTECTION ANGLE:

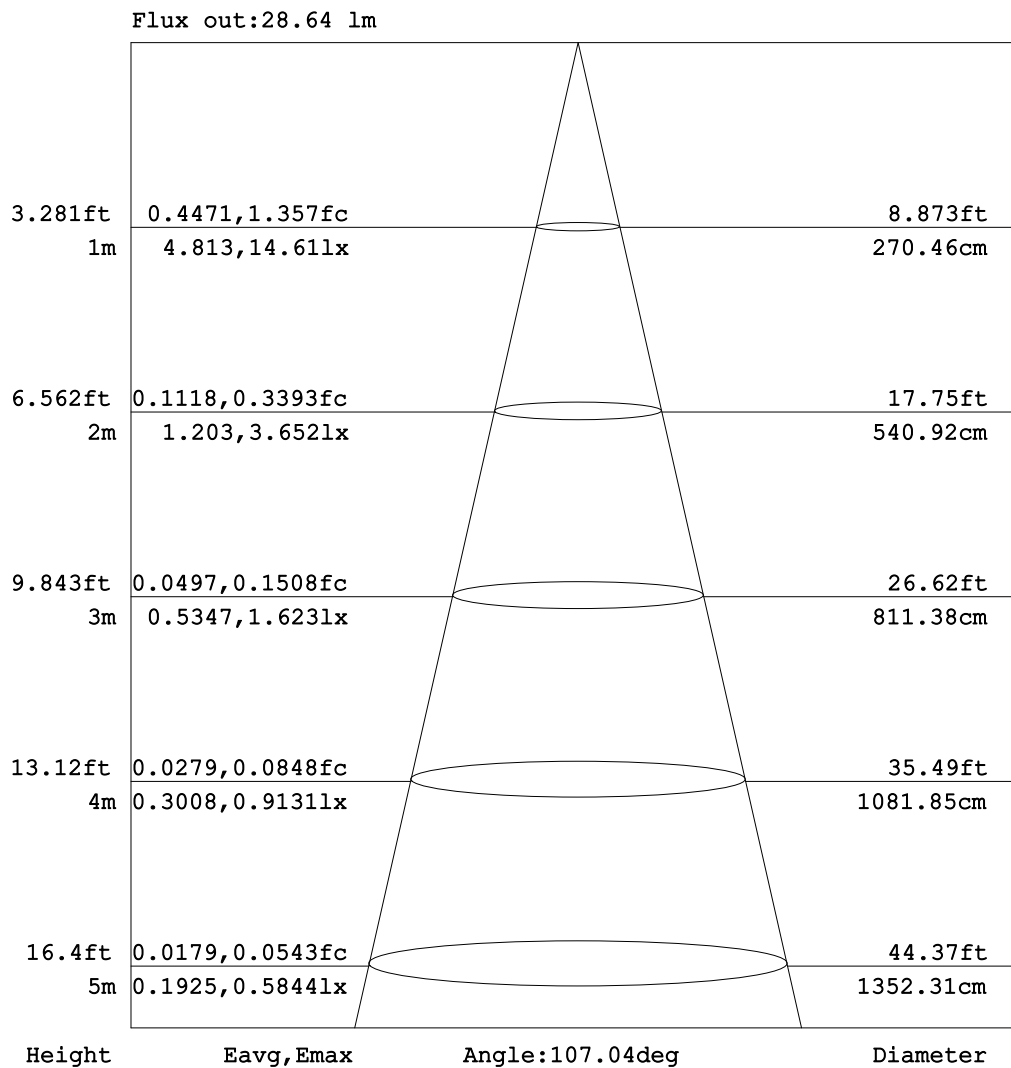


C Range: 0 - 360DEG
C Interval: 30.0DEG
Test Speed: HIGH
Temperature:25.3DEG
Operators:WFW
Test Date:2022-12-14

γ Range: 0 - 180DEG
 γ Interval: 1.0DEG
Test System:EVERFINE GO-2000B_V1 SYSTEM V2.0.269
Humidity:65.0%
Test Distance:10.800m [K=1.0000]
Remarks:

AAI Figure

Test:U:24.00V I:0.1700A P:4.080W PF:1.000 Lamp Flux:40.2039x1 lm		
NAME: SP01-24V-5050-60-RGBW-4000K-80-B	TYPE: 硅胶	WEIGHT:
DIM.: 15mm*7mm	SPEC.:	SERIAL No.:20221221
MFR.: OLYMPIA	SUR.:1*0.0015	PROTECTION ANGLE:



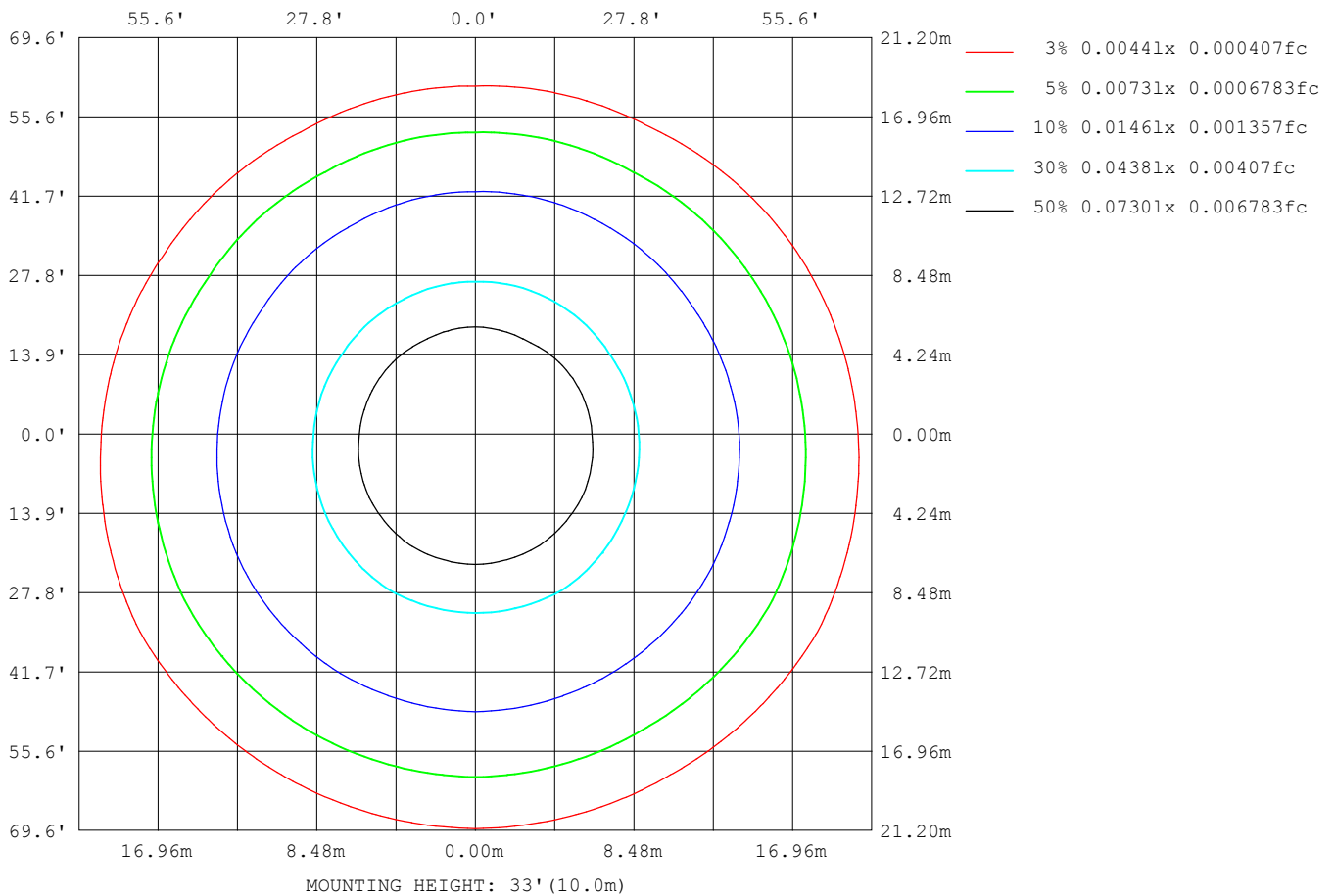
Note: The Curves indicate the illuminated area and the average illumination when the luminaire is at different distance.

C Range: 0 - 360DEG
C Interval: 30.0DEG
Test Speed: HIGH
Temperature: 25.3DEG
Operators: WFW
Test Date: 2022-12-14

γ Range: 0 - 180DEG
γ Interval: 1.0DEG
Test System: EVERFINE GO-2000B_V1 SYSTEM V2.0.269
Humidity: 65.0%
Test Distance: 10.800m [K=1.0000]
Remarks:

ISOLUX DIAGRAM

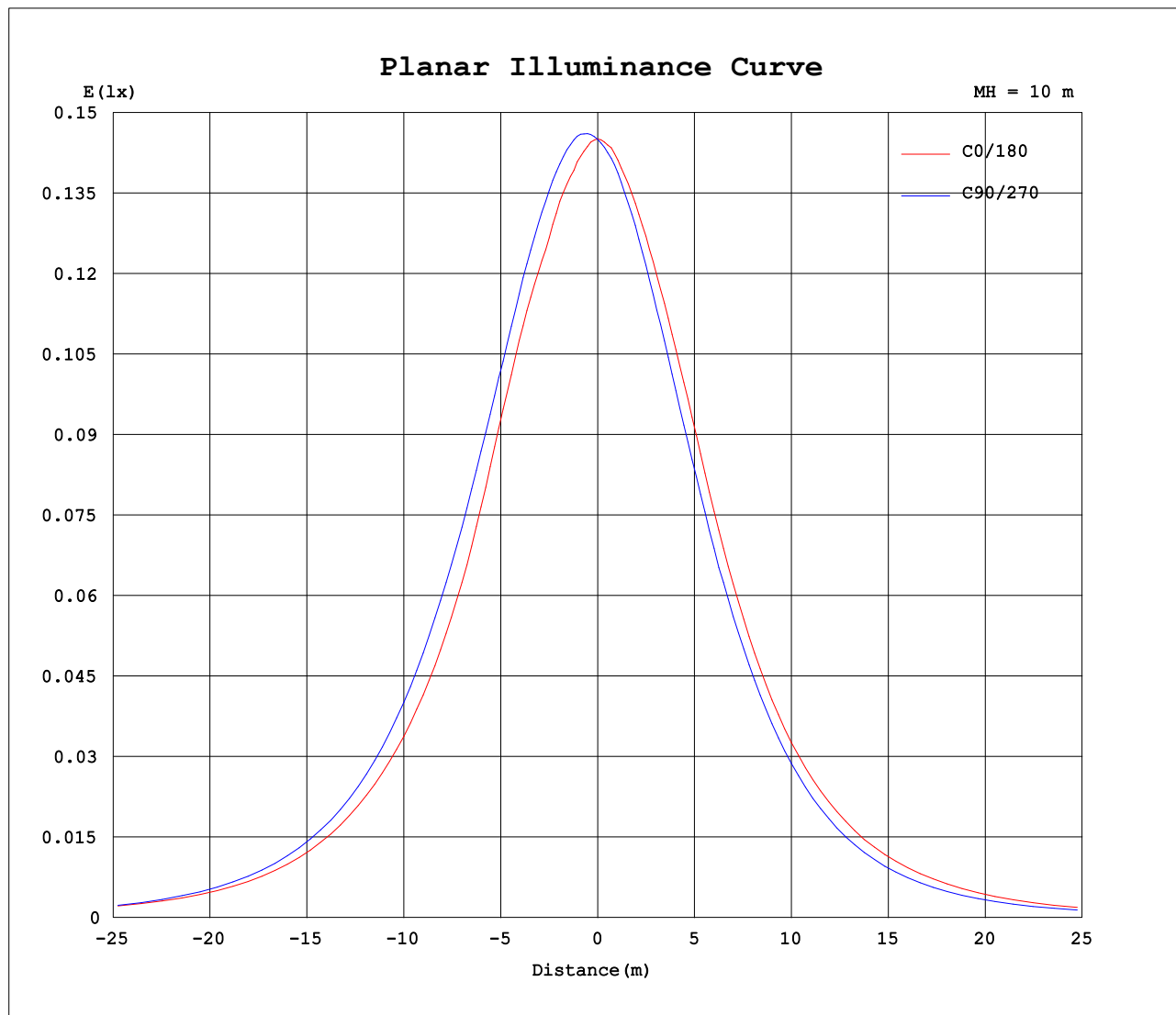
Test:U:24.00V I:0.1700A P:4.080W PF:1.000 Lamp Flux:40.2039x1 lm		
NAME: SP01-24V-5050-60-RGBW-4000K-80-B	TYPE: 硅胶	WEIGHT:
DIM.: 15mm*7mm	SPEC.:	SERIAL No.:20221221
MFR.: OLYMPIA	SUR.:1*0.0015	PROTECTION ANGLE:



C Range: 0 - 360DEG
C Interval: 30.0DEG
Test Speed: HIGH
Temperature:25.3DEG
Operators:WFW
Test Date:2022-12-14

γ Range: 0 - 180DEG
 γ Interval: 1.0DEG
Test System:EVERFINE GO-2000B_V1 SYSTEM V2.0.269
Humidity:65.0%
Test Distance:10.800m [K=1.0000]
Remarks:

Planar Illuminance Curve



C Range: 0 - 360DEG
C Interval: 30.0DEG
Test Speed: HIGH
Temperature: 25.3DEG
Operators: WFW
Test Date: 2022-12-14

γ Range: 0 - 180DEG
 γ Interval: 1.0DEG
Test System: EVERFINE GO-2000B_V1 SYSTEM V2.0.269
Humidity: 65.0%
Test Distance: 10.800m [K=1.0000]
Remarks:

LUMINOUS DISTRIBUTION INTENSITY DATA

Test:U:24.00V I:0.1700A P:4.080W PF:1.000 Lamp Flux:40.2039x1 lm		
NAME: SP01-24V-5050-60-RGBW-4000K-80-B	TYPE: 硅胶	WEIGHT:
DIM.: 15mm*7mm	SPEC.:	SERIAL No.:20221221
MFR.: OLYMPIA	SUR.:1*0.0015	PROTECTION ANGLE:

Table--1

UNIT: cd

C (DEG) γ (DEG)	0	30	60	90	120	150	180	210	240	270	300	330						
0	14.5	14.5	14.4	14.5	14.4	14.5	14.5	14.5	14.4	14.5	14.4	14.5						
5	14.4	14.4	14.6	14.8	14.7	14.5	14.4	14.4	14.2	14.2	14.1	14.2						
10	14.1	14.4	14.6	14.8	14.7	14.4	14.1	13.9	13.7	13.7	13.6	13.8						
15	13.8	14.2	14.6	14.8	14.7	14.2	13.8	13.4	13.2	13.2	13.1	13.4						
20	13.6	14.0	14.4	14.7	14.5	14.0	13.5	12.9	12.6	12.6	12.5	12.9						
25	13.2	13.7	14.0	14.4	14.2	13.7	13.0	12.4	11.9	11.9	11.8	12.5						
30	12.4	13.2	13.5	13.9	13.7	13.1	12.2	11.6	11.1	11.1	11.1	11.7						
35	11.4	12.3	13.0	13.2	13.0	12.3	11.3	10.6	10.2	10.2	10.3	10.8						
40	10.5	11.3	12.3	12.4	12.2	11.3	10.3	9.58	9.24	9.22	9.42	9.67						
45	9.56	10.2	11.3	11.3	11.2	10.2	9.23	8.50	8.18	8.14	8.40	8.67						
50	8.60	9.22	10.0	10.1	9.88	9.05	8.16	7.34	6.98	6.97	7.23	7.64						
55	7.47	8.12	8.49	8.68	8.43	7.84	6.99	6.17	5.75	5.74	6.00	6.57						
60	6.20	6.88	6.87	7.13	6.91	6.52	5.79	5.04	4.58	4.52	4.77	5.48						
65	4.92	5.52	5.38	5.46	5.34	5.23	4.49	3.93	3.45	3.38	3.61	4.33						
70	3.71	4.08	3.96	3.77	3.88	3.86	3.18	2.86	2.47	2.36	2.59	3.19						
75	2.52	2.71	2.63	2.24	2.57	2.52	2.09	1.89	1.61	1.49	1.72	2.16						
80	1.45	1.53	1.46	1.09	1.45	1.39	1.15	1.06	0.88	0.80	0.93	1.22						
85	0.58	0.55	0.51	0.37	0.56	0.48	0.38	0.40	0.30	0.31	0.32	0.47						
90	0.10	0.06	0.07	0.08	0.08	0.06	0.00	0.03	0.00	0.03	0.02	0.05						
95	0.06	0.06	0.06	0.09	0.06	0.06	0.00	0.00	0.00	0.01	0.02	0.01						
100	0.06	0.06	0.06	0.09	0.06	0.07	0.01	0.00	0.00	0.01	0.03	0.01						
105	0.07	0.08	0.06	0.09	0.06	0.08	0.01	0.00	0.00	0.01	0.04	0.01						
110	0.07	0.09	0.07	0.10	0.06	0.09	0.03	0.00	0.00	0.01	0.05	0.01						
115	0.07	0.09	0.08	0.10	0.07	0.10	0.05	0.01	0.07	0.01	0.06	0.01						
120	0.07	0.11	0.07	0.12	0.08	0.10	0.07	0.01	0.08	0.04	0.07	0.01						
125	0.07	0.12	0.07	0.12	0.08	0.12	0.08	0.03	0.09	0.05	0.09	0.01						
130	0.07	0.13	0.07	0.12	0.08	0.12	0.09	0.06	0.10	0.06	0.10	0.03						
135	0.07	0.14	0.07	0.13	0.08	0.12	0.10	0.07	0.12	0.07	0.11	0.07						
140	0.08	0.14	0.07	0.13	0.08	0.15	0.12	0.07	0.13	0.07	0.12	0.07						
145	0.08	0.14	0.08	0.15	0.08	0.15	0.14	0.07	0.14	0.07	0.13	0.07						
150	0.10	0.17	0.08	0.16	0.09	0.16	0.15	0.08	0.17	0.08	0.15	0.07						
155	0.10	0.17	0.09	0.17	0.09	0.17	0.17	0.09	0.16	0.10	0.16	0.08						
160	0.13	0.18	0.10	0.17	0.10	0.17	0.17	0.10	0.18	0.12	0.17	0.09						
165	0.15	0.19	0.12	0.18	0.12	0.19	0.17	0.12	0.19	0.14	0.18	0.10						
170	0.17	0.19	0.15	0.19	0.15	0.19	0.19	0.15	0.19	0.15	0.19	0.12						
175	0.18	0.19	0.17	0.19	0.15	0.19	0.20	0.16	0.19	0.17	0.19	0.14						
180	0.19	0.19	0.18	0.19	0.18	0.19	0.20	0.19	0.19	0.19	0.19	0.18						

C Range: 0 - 360DEG
C Interval: 30.0DEG
Test Speed: HIGH
Temperature:25.3DEG
Operators:WFW
Test Date:2022-12-14

γ Range: 0 - 180DEG
γ Interval: 1.0DEG
Test System:EVERFINE GO-2000B_V1 SYSTEM V2.0.269
Humidity:65.0%
Test Distance:10.800m [K=1.0000]
Remarks:

Photometric Data Table [cd]

G/C	0.0	30.0	60.0	90.0	120.0	150.0	180.0	210.0	240.0	270.0
0.0	14.51	14.47	14.44	14.50	14.43	14.48	14.51	14.47	14.44	14.50
3.0	14.43	14.45	14.57	14.67	14.61	14.54	14.45	14.43	14.33	14.31
6.0	14.32	14.44	14.61	14.80	14.68	14.54	14.34	14.27	14.05	14.10
9.0	14.18	14.36	14.63	14.85	14.73	14.47	14.19	14.05	13.82	13.81
12.0	14.03	14.34	14.63	14.85	14.74	14.34	14.00	13.74	13.57	13.51
15.0	13.81	14.18	14.57	14.81	14.74	14.23	13.82	13.44	13.19	13.19
18.0	13.73	14.05	14.47	14.75	14.61	14.07	13.60	13.15	12.82	12.85
21.0	13.55	13.98	14.36	14.66	14.42	13.92	13.36	12.84	12.44	12.45
24.0	13.27	13.80	14.12	14.45	14.23	13.78	13.08	12.50	12.02	12.04
27.0	12.89	13.55	13.80	14.22	13.98	13.50	12.70	12.07	11.58	11.61
30.0	12.35	13.19	13.53	13.93	13.69	13.13	12.20	11.59	11.08	11.10
33.0	11.74	12.72	13.22	13.55	13.33	12.65	11.67	11.01	10.57	10.59
36.0	11.19	12.12	12.89	13.07	12.89	12.12	11.11	10.39	10.03	10.02
39.0	10.64	11.45	12.46	12.60	12.41	11.56	10.50	9.795	9.451	9.421
42.0	10.11	10.89	11.96	12.01	11.85	10.93	9.888	9.172	8.849	8.805
45.0	9.560	10.24	11.30	11.35	11.21	10.23	9.230	8.500	8.177	8.140
48.0	9.012	9.639	10.56	10.63	10.46	9.590	8.599	7.786	7.450	7.426
51.0	8.390	9.008	9.707	9.818	9.568	8.807	7.927	7.074	6.743	6.700
54.0	7.704	8.344	8.806	8.974	8.744	8.067	7.187	6.422	5.995	5.993
57.0	6.970	7.630	7.837	8.094	7.816	7.325	6.514	5.688	5.268	5.266
60.0	6.201	6.882	6.874	7.131	6.908	6.522	5.787	5.037	4.582	4.524
63.0	5.419	6.057	5.974	6.133	5.953	5.732	5.018	4.351	3.883	3.860
66.0	4.671	5.234	5.101	5.115	5.038	4.957	4.215	3.721	3.225	3.167
69.0	3.950	4.368	4.242	4.097	4.172	4.132	3.426	3.084	2.644	2.564
72.0	3.230	3.544	3.425	3.128	3.348	3.329	2.705	2.461	2.090	2.010
75.0	2.524	2.706	2.628	2.235	2.566	2.519	2.090	1.892	1.605	1.491
78.0	1.859	2.014	1.907	1.494	1.873	1.806	1.515	1.366	1.155	1.061
81.0	1.256	1.293	1.242	0.9129	1.242	1.190	0.9816	0.9153	0.7534	0.6865
84.0	0.7292	0.7118	0.6739	0.4768	0.7084	0.6357	0.5177	0.4999	0.4073	0.3888
87.0	0.3200	0.2487	0.2508	0.1657	0.2992	0.2484	0.1582	0.2086	0.1583	0.1876
90.0	0.1044	0.0554	0.0696	0.0762	0.0766	0.0554	0	0.0349	0	0.0280
93.0	0.0625	0.0554	0.0555	0.0831	0.0554	0.0554	0	0.0138	0	0.0277
96.0	0.0623	0.0623	0.0554	0.0900	0.0554	0.0623	0.0138	0	0	0.0139
99.0	0.0555	0.0623	0.0554	0.0900	0.0554	0.0624	0.0139	0	0	0.0139
102.0	0.0691	0.0693	0.0554	0.0900	0.0554	0.0831	0.0139	0	0	0.0139
105.0	0.0693	0.0762	0.0554	0.0900	0.0623	0.0762	0.0139	0	0	0.0139
108.0	0.0693	0.0832	0.0554	0.0901	0.0623	0.0831	0.0278	0	0	0.0139
111.0	0.0693	0.0900	0.0624	0.1039	0.0623	0.0901	0.0416	0	0	0.0139
114.0	0.0693	0.0900	0.0692	0.1039	0.0692	0.0970	0.0485	0.0069	0.0693	0.0139
117.0	0.0693	0.1039	0.0693	0.1039	0.0693	0.0970	0.0556	0.0069	0.0693	0.0345
120.0	0.0693	0.1108	0.0693	0.1246	0.0762	0.0970	0.0693	0.0069	0.0763	0.0416
123.0	0.0693	0.1246	0.0693	0.1177	0.0762	0.1109	0.0830	0.0276	0.0901	0.0416
126.0	0.0693	0.1177	0.0693	0.1177	0.0762	0.1178	0.0831	0.0484	0.0900	0.0622
129.0	0.0693	0.1179	0.0693	0.1178	0.0762	0.1247	0.0900	0.0485	0.1107	0.0623
132.0	0.0693	0.1317	0.0693	0.1316	0.0762	0.1247	0.0970	0.0693	0.1108	0.0693
135.0	0.0693	0.1385	0.0693	0.1316	0.0762	0.1248	0.1040	0.0693	0.1177	0.0693
138.0	0.0761	0.1385	0.0693	0.1316	0.0762	0.1386	0.1177	0.0693	0.1178	0.0693
141.0	0.0762	0.1385	0.0829	0.1316	0.0762	0.1454	0.1178	0.0693	0.1317	0.0693
144.0	0.0831	0.1385	0.0831	0.1524	0.0762	0.1454	0.1317	0.0693	0.1385	0.0693
147.0	0.0969	0.1593	0.0831	0.1524	0.0899	0.1454	0.1386	0.0693	0.1385	0.0761
150.0	0.1038	0.1662	0.0831	0.1594	0.0900	0.1594	0.1454	0.0831	0.1661	0.0831
153.0	0.1039	0.1662	0.0900	0.1662	0.0900	0.1662	0.1455	0.0968	0.1593	0.0968
156.0	0.1039	0.1801	0.0900	0.1662	0.0969	0.1662	0.1662	0.0969	0.1594	0.0970
159.0	0.1317	0.1801	0.0970	0.1662	0.1038	0.1662	0.1731	0.0970	0.1801	0.1038
162.0	0.1316	0.1801	0.1246	0.1732	0.1107	0.1732	0.1731	0.1039	0.1802	0.1247
165.0	0.1524	0.1939	0.1247	0.1801	0.1247	0.1939	0.1731	0.1245	0.1871	0.1385
168.0	0.1593	0.1939	0.1384	0.1871	0.1316	0.1871	0.1939	0.1316	0.1939	0.1454
171.0	0.1800	0.1939	0.1524	0.1939	0.1454	0.1939	0.1940	0.1523	0.1939	0.1661
174.0	0.1801	0.1939	0.1731	0.1939	0.1455	0.1939	0.2008	0.1594	0.1939	0.1731
177.0	0.1869	0.1939	0.1731	0.1939	0.1592	0.1939	0.2008	0.1593	0.1939	0.1731
180.0	0.1939	0.1939	0.1801	0.1939	0.1801	0.1939	0.2008	0.1939	0.1939	0.1939
G/C	300.0	330.0								
0.0	14.43	14.48								
3.0	14.22	14.33								
6.0	13.98	14.10								
9.0	13.68	13.87								
12.0	13.41	13.71								
15.0	13.06	13.38								
18.0	12.75	13.10								
21.0	12.40	12.84								
24.0	11.97	12.59								
27.0	11.50	12.22								
30.0	11.05	11.75								

C Range: 0 - 360DEG
 C Interval: 30.0DEG
 Test Speed: HIGH
 Temperature: 25.3DEG
 Operators: WFW
 Test Date: 2022-12-14

γ Range: 0 - 180DEG
 γ Interval: 1.0DEG
 Test System: EVERFINE GO-2000B_V1 SYSTEM V2.0.269
 Humidity: 65.0%
 Test Distance: 10.800m [K=1.0000]
 Remarks:

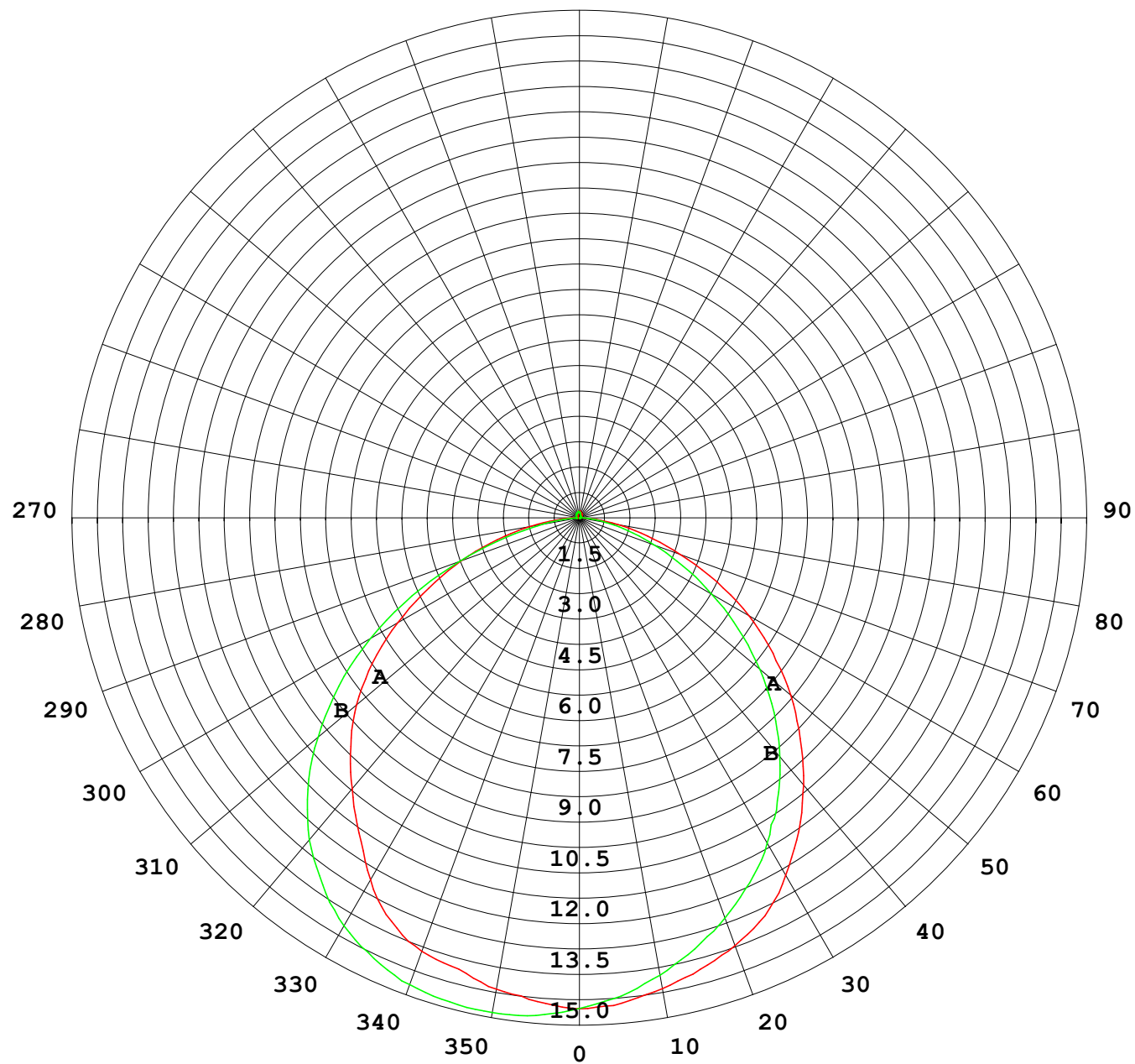
Photometric Data Table [cd]

33.0	10.60	11.18
36.0	10.13	10.56
39.0	9.604	9.892
42.0	9.029	9.275
45.0	8.399	8.666
48.0	7.713	8.042
51.0	6.992	7.392
54.0	6.251	6.768
57.0	5.503	6.124
60.0	4.769	5.480
63.0	4.056	4.781
66.0	3.412	4.081
69.0	2.789	3.416
72.0	2.214	2.759
75.0	1.716	2.162
78.0	1.238	1.574
81.0	0.8017	1.061
84.0	0.4212	0.6039
87.0	0.1514	0.2434
90.0	0.0208	0.0488
93.0	0.0208	0.0140
96.0	0.0210	0.0139
99.0	0.0277	0.0139
102.0	0.0278	0.0139
105.0	0.0416	0.0139
108.0	0.0485	0.0139
111.0	0.0554	0.0139
114.0	0.0623	0.0139
117.0	0.0693	0.0139
120.0	0.0693	0.0139
123.0	0.0763	0.0139
126.0	0.0900	0.0139
129.0	0.0970	0.0276
132.0	0.1039	0.0621
135.0	0.1108	0.0693
138.0	0.1315	0.0693
141.0	0.1316	0.0693
144.0	0.1316	0.0693
147.0	0.1316	0.0693
150.0	0.1524	0.0693
153.0	0.1593	0.0830
156.0	0.1662	0.0762
159.0	0.1800	0.0969
162.0	0.1801	0.0969
165.0	0.1801	0.1039
168.0	0.1871	0.1176
171.0	0.1939	0.1315
174.0	0.1939	0.1316
177.0	0.1939	0.1593
180.0	0.1939	0.1801

C Range: 0 - 360DEG
C Interval: 30.0DEG
Test Speed: HIGH
Temperature:25.3DEG
Operators:WFW
Test Date:2022-12-14

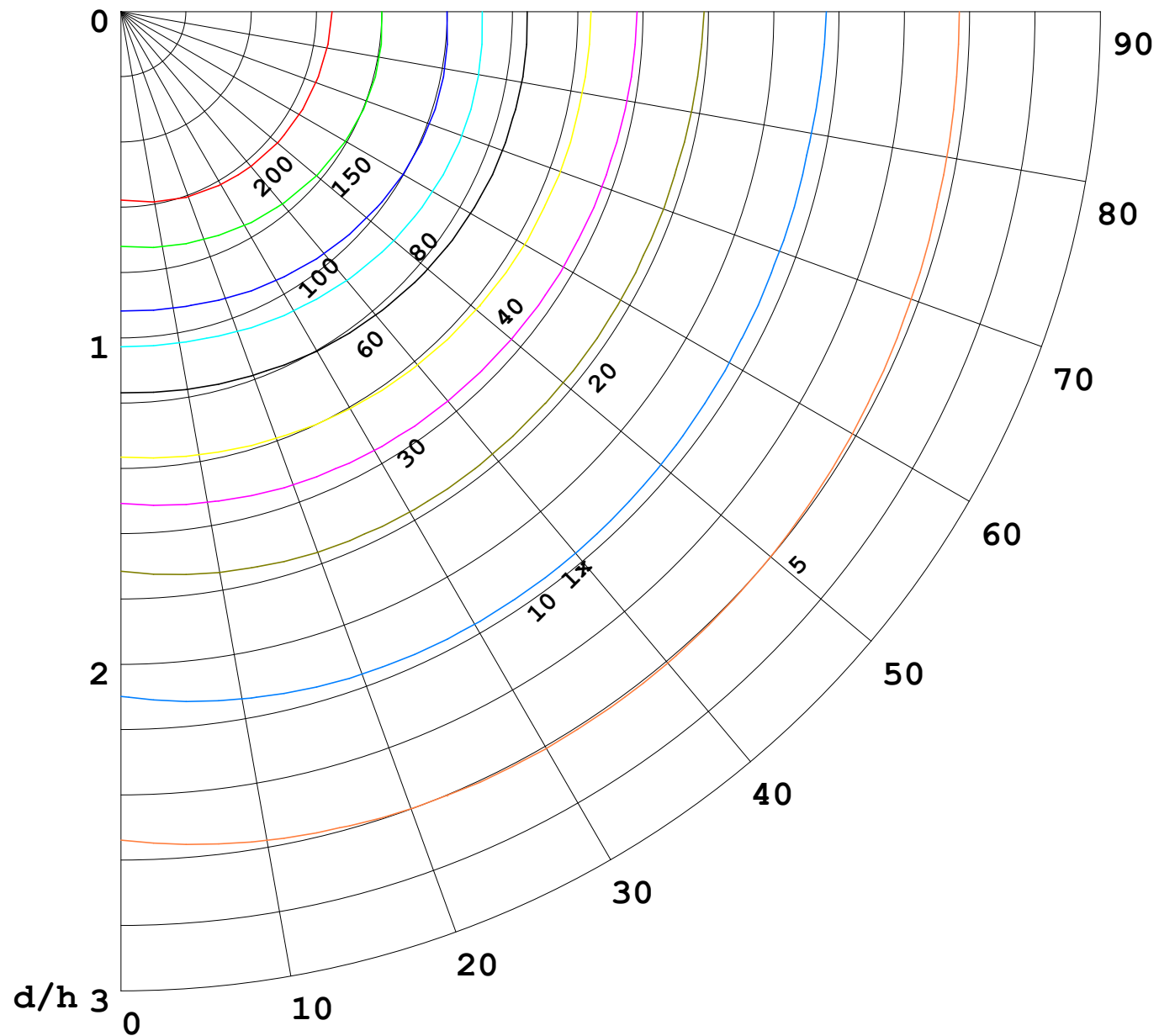
γ Range: 0 - 180DEG
γ Interval: 1.0DEG
Test System:EVERFINE GO-2000B_V1 SYSTEM V2.0.269
Humidity:65.0%
Test Distance:10.800m [K=1.0000]
Remarks:

I (cd)



1000 lm

$\kappa = 1$



F = 5000 lm
 K = 0.7
 Hcc = 0.0 m
 Hfc = 0.0 m
 Eave = 100 lx

	Pcc	Pw	Pfc
—	70	50	30
—	50	30	20

